



# THE GOLF VILLAGE AT ADMIRAL'S COVE

BEING A REPLAT OF A PORTION OF ADMIRAL'S COVE WEST PLAT NO. 1, AS RECORDED IN PLAT BOOK 62, PAGE 19, PUBLIC RECORDS, PALM BEACH COUNTY, FLORIDA, AND LYING IN SECTION 13, TOWNSHIP 41 SOUTH, RANGE 42 EAST, TOWN OF JUPITER, PALM BEACH COUNTY, FLORIDA

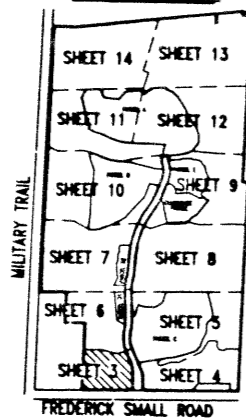
FEBRUARY, 1993

SHEET 3 OF 14

53

70 53

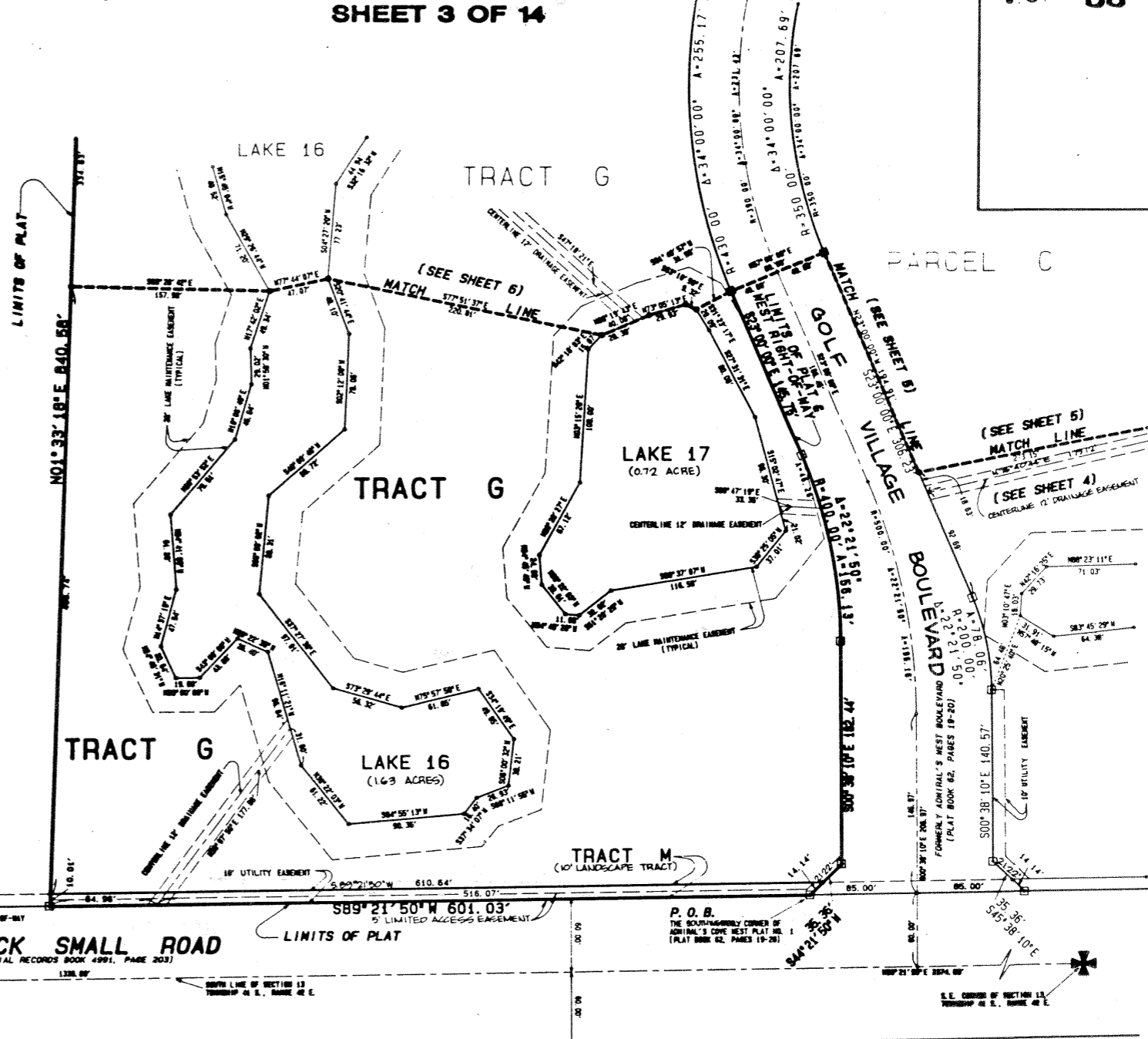
KEY MAP



MILITARY TRAIL

NOT INCLUDED

UNPLATTED



FREDERICK SMALL ROAD  
(OFFICIAL RECORDS BOOK 4991, PAGE 203)

LIMITS OF PLAT

P. O. B.  
THE SOUTHWEST CORNER OF  
ADMIRAL'S COVE WEST PLAT NO. 1  
(PLAT BOOK 62, PAGES 19-20)  
(PLAT BOOK 62, PAGES 19-20)

S.E. CORNER OF THE N.E.  
CORNER OF SECTION 13,  
TOWNSHIP 41 S., RANGE 42 E.

11800

THIS INSTRUMENT WAS PREPARED BY WILLIAM R. VAN CAMP, P.L.S.,  
IN AND FOR THE OFFICES OF BENCH MARK LAND SURVEYING & MAPPING, INC.,  
4152 WEST BLUE HERON BOULEVARD, SUITE 121, RIVERA BEACH, FLORIDA

**BENCH MARK**  
LAND SURVEYING & MAPPING, INC.  
4152 WEST BLUE HERON BOULEVARD, SUITE 121  
RIVERA BEACH, FLORIDA 33407  
PHONE (407) 244-2142 • FAX (407) 244-0888

RECORD PLAT

THE GOLF VILLAGE AT ADMIRAL'S COVE

- LEGEND
- DENOTES PERMANENT REFERENCE MONUMENT
  - L.A.E. DENOTES LIMITED ACCESS EASEMENT
  - O.A.R. DENOTES OFFICIAL RECORD BOOK
  - P. DENOTES PAGE
  - P.O.P. DENOTES PERMANENT CONTROL POINT

DATE: 2-1-93	DRAWN BY: P. VINGA	CHECKED BY: W. R. VAN CAMP	SCALE: 1" = 50'
SHEET NO. 3			OF 14